

ASSOCIATION FOR WOMEN IN SCIENCE, PALO ALTO CHAPTER

WWW.PA-AWIS.ORG

P.O. BOX 2641, SO. SAN FRANCISCO, CA 94083-2641

Upcoming Meetings:

October 27, 2010

Fiona Hyland, Associate Director of Biological Information Systems at Life Technologies

“Next Generation Sequencing, human evolution and Disease”

November 11, 2010

Special Leadership Event #4

“Purposeful Risk Taking”

November 17, 2010

Renee Tannenbaum, Chief Commercial Officer, Elan Pharmaceuticals, Inc.

“Risky Business - It’s about choices”

Contents:

Membership, How to join.....p2
 Mentoring Update.....p3
 Banquet photos/highlights....p4-5
 Meeting Highlights.....p6
 Event Flyers.....p7
 Board Information.....p8
 Networking Tip.....p8

Call for Volunteers:

- Newsletter editor
 - Research and write articles for the newsletter
 - Website maintenance
 - Website overhaul
- For more information email:
pa.awispresident@gmail.com

President's Note:

Welcome!

As we start the 2010-2011 year we have many interesting events and newsletters planned. This year we also have two new committees to add to the existing Mentoring and Programs Committees. The Membership Committee will focus on increasing membership, adding to the membership benefits, and managing our membership information. The Industry Outreach Committee will work to get the word out about AWIS to companies and to make it easier for our members to network with people in the tech and biotech industry. Look for updates from these committees throughout the year.

We are currently in the middle of a series to develop leadership skills. We have 2 more events as part of a 6-part webcast series developed by Jo Miller, CEO of Women’s Leadership Coaching. Jo Miller spoke for our September 2007 and September 2009 meetings (you can read a summary in the October 2007 newsletter) and we were so impressed with her that we arranged to purchase her webinar series to show to our members. The topics so far have included “Making the Most of Mentoring”, “Succeeding as an Agent of Change”, and “Managing Others, with or without Direct Authority”. If you haven’t made it to any of these cozy and informative gatherings so far, there is still time. I encourage you to attend either the November event “Purposeful Risk-Taking” or January event “Transitioning from Employee to Manger”.

If you do miss an event, be sure to read about it in the newsletter. I hope you’ll take a moment to enjoy the newsletters as they will include summaries from our members of recent programs, articles of interest, membership and chapter info, and upcoming events. Please help us make the newsletter interesting by contributing and article! We would love to hear from our members. Email the newsletter editor at me at pa_awis.editor@yahoo.com.

I look forward to helping AWIS serve your needs better, so please let me know if you have any comments questions or ideas.

Ashley Fouts
 President, Palo Alto AWIS Chapter

***ALL MENTORS PLEASE FILL OUT A NEW FORM**

Let AWIS be “a network, a resource, a voice” for you!

Benefits of membership:

Network! Receive support from other women in science in several ways:

- online through [awis.org](http://www.awis.org) (search for contacts by discipline, geographic area, or employment sector)
- online in our LinkedIn group only for member
- in person at our monthly meeting, or picnic
- find or be a mentor: at in person dinner meetings or online through Mentornet)

Attend our monthly chapter meetings for a discounted rate
Problem-solve with others who have been where you are now
Develop leadership skills to advance your career and build your resume.

Nominate your mentors for our annual awards: get visibility among the group and a festive excuse to contact these mentors.

Project a voice with impact on national issues like science education

Promote opportunities for women in science

Exercise your commitment to foster the next generation of women in science, e.g. by volunteering in schools

Meet and work with distinguished women in science

Get your CV some attention: with over 150 local current members, you never know if a fellow member will be reviewing your job application

How to join:

New Members: Go to www.awis.org. Click “Join Now” on panel on right. Click on your level of support for example,

Student: \$25.00 Annual Membership Fee

Follow directions and be sure to join both national and Palo Alto Chapter.

Returning member: Go to www.awis.org. Click “Renew” on panel on right. Log in and make sure your information is correct (for example your job or student status). If you are having trouble renewing at the correct level, try logging in and editing your profile before attempting to renew.

4th Annual Picnic

Violet Votin

What's a summer Saturday afternoon without a hot grill, sunshine, and biotech chat? On August 14th, several AWIS members, future members and family members relaxed at the annual AWIS picnic. Beresford Park was the place to be. We had a chance to catch up with old friends from all over the Bay Area and meet new ones.

Thanks to Katy Korsmeyer and her clan for cooking up the beef, chicken and veggie burgers, as well as providing crafts for the kiddies. The rest of us contributed salads, sides and desserts. Be sure to come next year!

Keep up to date on Events

Subscribe to the Google calendar!

If you use Google Calendar:

1. Go to your Google calendar page 2. Click “Add” button at the bottom of “other calendars”
3. Click “Add by URL” button 4. Give this address:

<http://www.google.com/calendar/ical/awis.ncc%40gmail.com/public/basic.ics>

If you use iCal on a Mac:

1. Start your iCal 2. Click “Calendar” on menu
- Click “Subscribe...” button 3. Give this address

<http://www.google.com/calendar/ical/awis.ncc%40gmail.com/public/basic.ics>

Meetings around the Bay

Check out:

Easy Bay AWIS <http://www.ebawis.org/>

SF AWIS <http://www.sfawis.com/>

Bio2Device <http://bio2devicegroup.org/>

AWIS in the Community

Staff Writer

AWIS members and friends are a great bunch of scientists who give back to the community through many Community Outreach events throughout the year. Members regularly participate in Expanding Your Horizons and Sally Ride Science Festivals and volunteered as school career day speakers and science fair judges. Our AWIS chapter has provided a special award to a rising female high school scientist at the Synopsys Championship for 5 years! Flight For Kids Festival was recently in San Jose and Yuri's Night is upcoming at NASA Ames.

If you are interested in sharing your love of science, showing that science is fun and engaging, AWIS can provide you with the support for activities, idea brainstorming and supplies. Please contact Katy Korsmeyer kuokaty@scientist.com if you are interested in outreach activities to inspire and excite the next generation of kids.

A New Face for the Mentoring Committee

The Mentoring Committee is gearing up for the 2010-2011 academic year, and we are looking forward to a fabulous year. Our biggest news is that we have undergone a leadership change, with the introduction of Jennifer Shieh and Katrin Sangkuhl as new Mentoring Co-Chairs, replacing Jenny Saltzman and Susan Bernhard. We were extremely sorry to see these two incredible women step away from their Co-Chair positions after so many years of dedicated service; Susan will remain involved with the Committee as a member and Jenny will move on to tackle a very full plate including new teaching duties at Stanford. Lucia Mokres will continue as a Co-Chair (yes, it truly takes 3 Co-Chairs to run this committee!). So that you can get to know us better, brief bios for each Co-Chair are included below.

Our kick off meeting is on October 4 on the Stanford campus. A panel of mentors and protégés will discuss how they established a positive and productive mentoring relationship. This will be a highly interactive program and will be great for new participants as well as returning mentors and protégés.

The committee has been very active restructuring internally. With the help of committee members, we have been busy revising all of our Mentoring resources, organizational tools, and data into a web-based format. This will allow the committee to streamline efforts in organizing each meeting and maintaining a better database which will facilitate leadership transfers and sustain institutional memory. It will also allow other committees such as Programs to more easily request and share information about speakers, meeting topics, and other resources, adding value to our AWIS chapter as a whole.

We have also revised the mentor and protégé profile forms, and these too will become more automated, allowing for a more efficient and effective matching process. The pairing process itself will remain the same, but the way in which data is collected will be much improved. **Even if you are an established mentor, please do fill out a new form.**

We are very actively seeking new mentors; if you know of someone who would make a great mentor, please do not hesitate to contact Lucia Mokres (luciadvn@gmail.com).

Best wishes for a wonderful fall from the Mentoring Committee!

Lucia Mokres, Jennifer Shieh, and Katrin Sangkuhl,
Mentoring Committee Co-Chairs

Mentoring Committee Bios

Katrin Sangkuhl

I studied Biochemistry in Germany and received my PhD 2003. I came to the US for my postdoc, which I did in the Department of Reproductive Biology. Now I am working in the Genetics Department in Prof. Russ Altman's group as research scientist (staff) involved in the Pharmacogenomics Knowledge Base (PharmGKB) project, which is led by Dr. Teri Klein and Prof. Altman. I joined the Mentoring program as a protégé and got a great mentor in 2008. I have since introduced the program to postdocs over the postdoc email list, by talking to Stanford Postdoc Council co-chairs, and in personal conversations. Outside of work and AWIS, I like to spend time with my family and friends doing fun stuff around the bay area (such as hiking, beach trips, visiting the Monterrey aquarium, zoo, etc).

Jennifer Shieh

In April, I finished my PhD in Neuroscience, looking at the cell biology of how newborn neurons move (video at <http://jcsieh.com>). I have 3 jobs right now: biology associate at Syapse, a bioinformatics start-up; renaissance woman for Subversus Interactive, a mobile games start-up; and during the fall, I am a Christine Mirzayan Science and Technology Fellow with the National Academies in Washington DC. I'm excited to be learning about science policy while working at the Koshland Science Museum run by the National Academy of Sciences. I have been with the AWIS Mentoring program Since 2004 (my 2nd year in grad school!). I became involved with the Mentoring and Programs committees because I wanted to give back in a meaningful way to the program that was helping me! Outside of grad school and AWIS, I have had tons of awesome experiences during grad school: I wrote a textbook on the wide variety of techniques used in neuroscience; worked at the Tech Museum in San Jose through a program in the Stanford Genetics department; and I participated in the ASCB CellSlam.

Lucia Mokres

I graduated with a Doctorate in Veterinary Medicine from Colorado State University in 2003. After a brief time in equine medical/surgical practice, I went on to Stanford to do a postdoctoral fellowship in Neonatology, studying the effects of mechanical ventilation on lung development in neonates, using a mouse model. I finished in 2008, and am now a Senior Clinical Scientist at Abbott Vascular, Structural Heart. I have been with AWIS since 2005; and have been Co-Chairing the Committee since 2007. Mentorship is truly essential for career success, and more broadly for success in life in general. In fact, I owe my current position (a GIANT leap and bound over the first job I held out of my postdoc) to a connection made via the AWIS mentoring program! Outside of work and AWIS, I am a Category 2 cyclist and am on the board of the club for which I race. I also co-instruct an elective for Stanford medical students, which uses horses to model the doctor/patient and doctor/doctor or doctor/staff relationships, in an effort to impart skills in communication, bedside manner, and teamwork. Finally, I am co-chair of the mentoring program at Abbott Vascular (can't ever get enough of mentoring!).

16th Annual Award Banquet

By Kelly Harradine

The Northern California Chapters of AWIS came together on April 28, 2010 for our 16th year to celebrate outstanding women scientists who also have been mentors to other women. The Palo Alto Chapter organizes this yearly banquet to award exceptional professional women in science as well as support young women with scholarships who are just getting started in their science-based careers. It is a great way to toast our efforts and to celebrate the special women and men that support women in science.

Mary Alice Yund did a wonderful job as the Master of Ceremonies and provided insightful historical views of the different awards. Ellen Weaver, Ph.D., in whose honor one of the awards is given and former National AWIS president (1992-1993) came to the event with her granddaughter at her side. Ellen has been a scientist since the 1940s, at that time she worked on the Manhattan Project as a chemist. She shared a story that reflected on how far woman in science have come since her days as a professor at San Jose State University. Ellen developed a way to measure chlorophyll and thus productivity in oceans as one of her many accomplishments in science. In 1979, she was asked to join a group from Scripps on a research cruise to the Antarctic to measure chlorophyll. At the last minute, she was told that she could not join the trip because the "funding agency" does not allow women on ships. The following year she traveled to Washington and sat down with a person from the funding agency who then blamed the "coast guard" for barring her from working on the ship. Thanks to her efforts, the next year Ellen was allowed on the trip. Coincidentally, the day after the banquet the U.S. Navy removed the ban on women to work on submarines.

In addition to the honorees mentioned below we also gave out six scholarships this year to support young college women in their pursuit a science-based career of choice. It was indeed an inspiring night for all. Thank you to all that made this a wonderful night. We hope to see you next year at the 17th Annual Banquet in 2011.



Volunteers check in guests



Attendees mingle in the lobby over hors d'oeuvres



Volunteers check in guests



Mary Alice Yund as MC



Ellen Weaver



Awardees, their family, and friends enjoy dinner

Scholarship Presentations



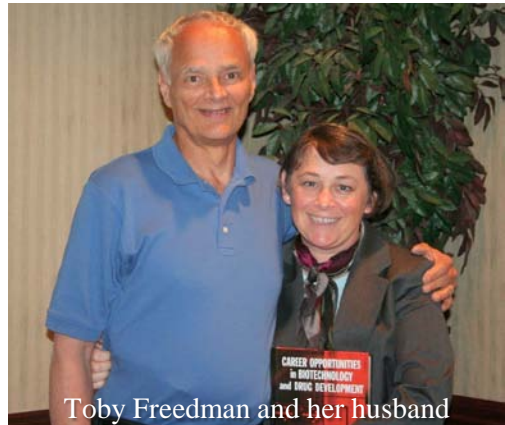
Awardees at the 2010 Banquet

Toby Beth Feedman, Ph.D. was awarded the Distinguished Professional Award for 2010. Helping people motivates Toby. She started her career at BioQuest as a recruiter that then lead into career coaching. During this experience she saw a great need for a book on biotech careers and decided to write a such a book to reach out to more people who needed her guidance. With the support of her loving family and husband she finished it in just three short years! Among Toby's many great accomplishments she also founded her own recruiting firm, Synapsis Search.

Nadine C. Gassner Ph.D. (UC Santa Cruz) received the Ellen Weaver Award for 2010. Nadine's parents instilled the importance of mentoring during her childhood. During graduate school she founded a support group called "Peak of the Month" club to help her and her fellow graduate students minimize the great challenge of writing a dissertation. Later she discovered AWIS and joined in its mentoring program. Today she is a mother and a teacher who reaches out to economically challenged high-school girls and introduces them to science and technology using high-throughput screening technology. She left us with thoughts on her favorite children's book she reads to her kids: "The Three Questions" by Jon J. Muth: (Q1) Who is the most important one? (A1) The person next to you. (Q2) When is the best time to do things? (A2) Now and (Q3) What is the right thing to do? (A3) To be generous and kind.

Patricia R. Burchat, Ph.D. (Stanford University) was the Judith Pool Awardee for 2010. Mentoring has played a huge part in Pat's life. During high school and undergraduate she benefited immensely from interacting with people in what she called informal group mentoring. This experience allowed her and others to bounce questions around and learn which questions were important to ask throughout her career. She reminded us to be mindful and sensitive to other peoples' challenges that we may not have faced in our careers such as being the first one in their families to go college and potential financial struggles which may stop a student from pursuing and reaching their full potential. Pat was surprised by the presence of several of her Stanford colleagues at the award banquet who secretly signed-up to attended to show their support and gratitude.

Awardees



Toby Freedman and her husband



Rachel Harte and Nadine Gassner



Lucia Mokres and Pat Burchat

May 2010 Program: What is Science with Helen Quinn

Staff Writer

Dr. Quinn was able to teach a roomful of scientists more about the details and intricacies of science in a talk titled “What is Science?” Dr. Quinn’s is an extremely highly regarded theoretical particle physicist. Her interest in communicating and teaching science has led her to contribute to curricula for California science teachers and NASA’s K-12 teachings.

Dr. Quinn pointed out that one of the drivers of science is the desire to resolve contradictions through an iterative process of asking questions, collecting data, and refining a model. This defines the scientific process and leads to theories, which are generally accepted and are backed by much testing. She makes the point that the “incompleteness of a theory in no way compromises [its] stability.” It is important to help the public understand how much resolution of contradictions was required to make a theory and that it is stable and well established.

One area that confuses the layperson about science is medicine. Newly discovered findings are broadly explained to the public as truth and used to make interventions before the mechanisms are well understood. Then when further experiments result in changes in the “truth”, the public gets the impression that science leads to constantly changing conclusions. This results in the impression of science as an authority that provides one story among many that the public uses to make sense of the world. Understanding this will help scientists communicate science better.

To read more from Dr. Quinn visit

<http://www.asa3.org/ASA/topics/AboutScience/WhatisSciencePhysToday2009.pdf>

June 2010 Program: Networking and Panel Discussion, from Bench to Business

Staff Writer

The June program provided three real life stories about how individual women have made transitions from graduate school and benchwork to non-research jobs in biotech companies. The three presenters were Ulrike Delling, who went from scientist at Scios to Project Manager at Exelexis, Angele Maki, who did a post doc in biological chemistry then took a job in Business Development at Medarex, and Nitzan Sternheim, who finished her PhD in Developmental Biology, transitioned to Clinical Research Associate at XDx and then to Clinical Regulatory Affairs at Genentech. Each stressed that her current job required a distinct set of skills that matched her personality and interests. Below is a summary of the skills and duties entailed in each job.

Ulrike explained that project management involves planning and attending lots of meetings. She works on timetables and coordinates everything from manufacturing to clinical trials. She also follows up on regulatory affairs and even marketing. The skills she stressed were necessary include teamwork, adaptability and good “soft skills”. She emphasized that the project manager has no absolute authority over the people she works with, thus she must be a very good communicator who can explain priorities effectively in order to align the teams.

Business development also requires communication and particularly good judgment in business affairs. Angele stressed that she had developed instincts about people and deals that really helped her through negotiations with things like MTAs, partnering, and out-licensing. She also stressed the need for analytical ability and perseverance.

Nitzan explained that her scientific background was extremely useful in planning clinical trials because she knows how to interact with scientists and plan experiments. Organization and attention to detail are critical, particularly when thinking about the trial and controls to include. One insight Nitzan had into Regulatory Affairs is that you provide your expertise, and guide decision making, but that there are no definite answers. She has found that the ability to make decisions in a “grey area” is a constant requirement in her position.

While each told a distinct story of their motivations and experiences there were more commonalities to the stories than differences. All three women admitted that luck had played a large part in their switch into business. But the stories all told a more complete picture of women who had positioned themselves well and developed and used their networks.



Women's Leadership Seminar Series

Are you a woman who is early-to-mid-level in your career? Do you want to be more effective in your current position and build skills for advancement? It is always a PLUS to hear from other successful women and to hear what they have done in similar situations. If so, don't miss our special events on women's leadership.

SPECIAL OFFER : AWIS Palo Alto will host a 6-part Webinar Leadership series developed by Jo Miller

- Making the Most of Mentoring (March 2, 2010)*
- Succeeding as an Agent of Change (May 6, 2010)*
- Managing Others, With or Without Direct Authority (June 28, 2010)*
- Leading Your Leaders: How to Manage Upward (September 1, 2010)*
- Purposeful Risk-Taking (November 11, 2010)*
- Transitioning from Employee to Manager (In January 2011, TBD)*



LOCATION/TIME :

Genomic Health Inc, 301 Penobscot Drive, Redwood City, CA94063

7-7:30pm: Dinner and Networking

7:30-8:30pm: Watch Webinar

8:30-9pm: Discussion

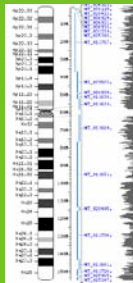
RSVP on Acteva (Sign up today! Space limited to 24 people) <http://www.acteva.com/go/pa-awis>

COST : \$5 AWIS members, \$5 grad students, \$10 non-members.

Disclaimer: we watch recorded webinar not a live one. There is 5% chance that we do not have the movie.

NGS: Shedding light on human evolution & disease Wednesday, October 27, 2010

Fiona Hyland



Fiona is Associate Director, R&D, in the Biological Information Systems division. She currently leads the SOLiD sequencing bioinformatics algorithm group, which is working on developing algorithms for analyzing next-generation sequencing data (NGS).

Her undergraduate training was in genetics and her graduate training was in Biostatistics and Quantitative Genetics. She worked in the software industry in data mining and information architecture, before transitioning back to science, joining Life Technologies. Fiona has worked on diverse projects, encompassing forensic genetics; pharmacogenomics; statistical genetics; family linkage mapping and association studies to elucidate the genetic basis of complex disease; bioinformatics; and analysis of genotyping and gene expression data. Fiona lives in the Bay Area and is the mother of two young children.

Developing novel algorithms for analyzing next-generation sequencing (NGS) data.

(NGS) allows hypothesis-free interrogation of complete genomes, facilitating the detection and discovery of known and novel genetic variation. To fully utilize the data produced by massively parallel short-read technologies, novel algorithms need to be developed. We describe sequencing of humans from multiple

continents, using a novel ligation-based sequencing assay that enables a unique form of error correction that improves the raw accuracy of the aligned reads to >99.9%, allowing accurate detection of SNPs with as few as two reads per allele. Over 98% of the reference genome is covered with at least one uniquely placed read, and 99.65% is spanned by at least one uniquely placed mate-paired clone. We typically identify 3.5-4 million SNPs per genome, 5-20% of which are novel.

We typically detect 200-400,000 intra-read insertions and deletions, and approximately 50 inversions. Dozens of mutations previously described in OMIM and hundreds of nonsynonymous single-nucleotide and structural variants in genes previously implicated in disease are identified in a single individual. Patterns of population genetic variation shed light on human evolution and on disease etiology.

PARC Auditorium, 3333 Coyote Hill Rd Palo Alto, CA	7:00-7:30 Networking Dinner 7:30-7:45 Announcements 7:45-8:45 Seminar
--	---

Directions from 280: Exit at Page Mill Rd and go East towards Palo Alto. Turn Right on to Coyote Hill Rd (before Foothill). Turn Left into PARC and follow signs to auditorium on left at end of parking area, down a flight of stairs.
From Stanford/Palo Alto: From Page Mill, take Foothill South towards Los Altos. Take Right on Hillview and PARC is second driveway on Right. Follow drive up the hill and to the left and follow signs to the auditorium.

AWIS Palo Alto Board 2010-2011		
President	Ashley Fouts	Pa.awispresident@gmail.com
Vice President and NCC-AWIS Rep	Ulrike Delling	ulrikedelling@hotmail.com
Secretary	Alayne Brunner	alayne.brunner@stanford.edu
Treasurer	Chitra Chakravarthy	chitra.chakravarthy@gmail.com
Member-at-Large	Rachel Harte	harterac@yahoo.com
Mentoring committee chairs	Lucia Mokres Jennifer Shieh Katrin Sangkhuhl	Mentoring_awis@yahoo.com
Programs committee chairs	Hojeong Kim Kelly Harradine	pa.awisprograms@gmail.com
Membership committee chair	Nitzan Sternheim	nitzan@sternheim.com
Community Outreach chair	Katy Korsmeyer	kuokaty@scientist.com
Industry Outreach chairs	Ana Older Aguilar Marcy Auerbach	Anastazia.magdalena@gmail.com Marcy.robin@gmail.com
Newsletter Editor	Maytal Rebecca Bar-Shir OPEN	pa_awis.editor@yahoo.com
Webmistress	Shibing Wang OPEN	awis.pa.webmistress@gmail.com
Scholarship committee chairs	Yun Hsu Rachel Harte	Pa.awisscholarships@gmail.com

Networking tip for success

If you're chatting with someone you'd like to make further contact with, ask for their business card. Look at the card carefully and comment on it. One tip is to ask if this is their preferred email address. As soon as possible afterward, write some identifying information on the back of the card (where you met, what you talked about, anything to trigger your memory later) and then follow up!